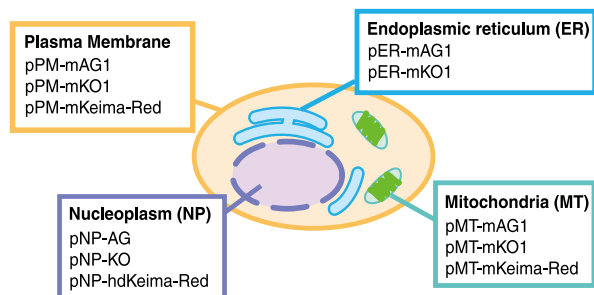


# Organelle targeting vectors

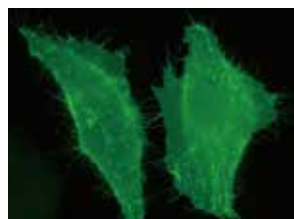
- Tools for labeling of subcellular structure
- Multi-labeling cells with different colors

*CoralHue*<sup>™</sup> organelle targeting vectors allowing to visualize subcellular structures encode fusion proteins of fluorescent proteins and localization signal sequences.

It can be used for fluorescent labelling of subcellular structures in living cells.

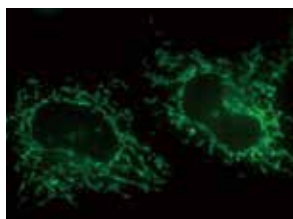


## Plasma membrane (PM)



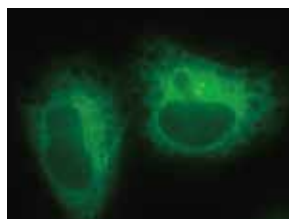
*CoralHue*<sup>™</sup>pPM-mAG1

## Mitochondria (MT)



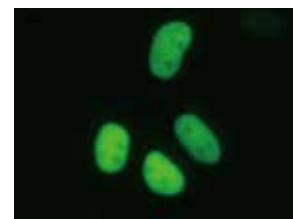
*CoralHue*<sup>™</sup>pMT-mAG1

## Endoplasmic reticulum (ER)

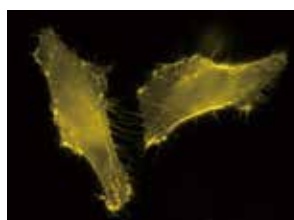


*CoralHue*<sup>™</sup>pER-mAG1

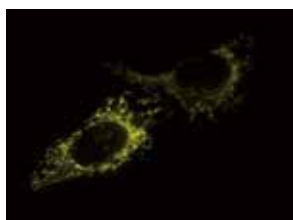
## Nucleoplasm (NP)



*CoralHue*<sup>™</sup>pNP-AG



*CoralHue*<sup>™</sup>pPM-mKO1



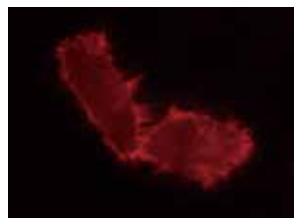
*CoralHue*<sup>™</sup>pMT-mKO1



*CoralHue*<sup>™</sup>pER-mKO1



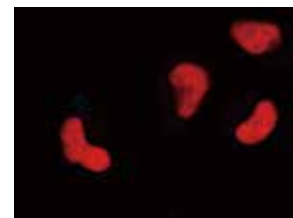
*CoralHue*<sup>™</sup>pNP-KO1



*CoralHue*<sup>™</sup>pPM-mKeima-Red



*CoralHue*<sup>™</sup>pMT-mKeima-Red



*CoralHue*<sup>™</sup>pNP-hdKeima-Red

Volume : 20  $\mu$ g

Fluorescent protein	Abbr.	Form	Excitation maxima (nm)	Emission maxima (nm)	Mitochondria	Endoplasmic reticulum	Plasma membrane	Nucleoplasm	$\beta$ -Actin
Azami-Green	AG	Tetramer	492	505				AM-V0214M	
	mAG1	Monomer	492	505	AM-V0201M	AM-V0202M	AM-V0203M		AM-V0205M
	mAG407	Monomer	407	498		AM-V0292M			
Kusabira-Orange	KO1	Dimer	548	561				AM-V0234M	
	mKO1	Monomer	548	559	AM-V0221M	AM-V0222M	AM-V0223M		AM-V0225M
Keima-Red	mKeima-Red	Monomer	440	620	AM-V0251M		AM-V0253M		
	hdKeima-Red	Dimer	440	616				AM-V0274M	
	hdKeima570	Dimer	440	570				AM-V0324M	
Midoriishi-Cyan	mMiCy1	Monomer	470	496	AM-V0261M				
Kusabira-Cyan	hKCy1	Dimer	453	486				AM-V0284M	

*CoralHue*<sup>™</sup> is a product of co-development with Dr. Atsushi Miyawaki at the Laboratory for Cell Function and Dynamics, the Brain Science Institute, and the Institute of Physical and Chemical Research (RIKEN).

Use of *CoralHue*<sup>™</sup> requires a license from MBL Co., Ltd. MBL grants non-profit research organizations the right to use the product for non-commercial research purpose. For commercial entities a commercial license is required. For more information, please contact [support@mbi.co.jp](mailto:support@mbi.co.jp)